

Opportunities: modern data acquisition and regional integration

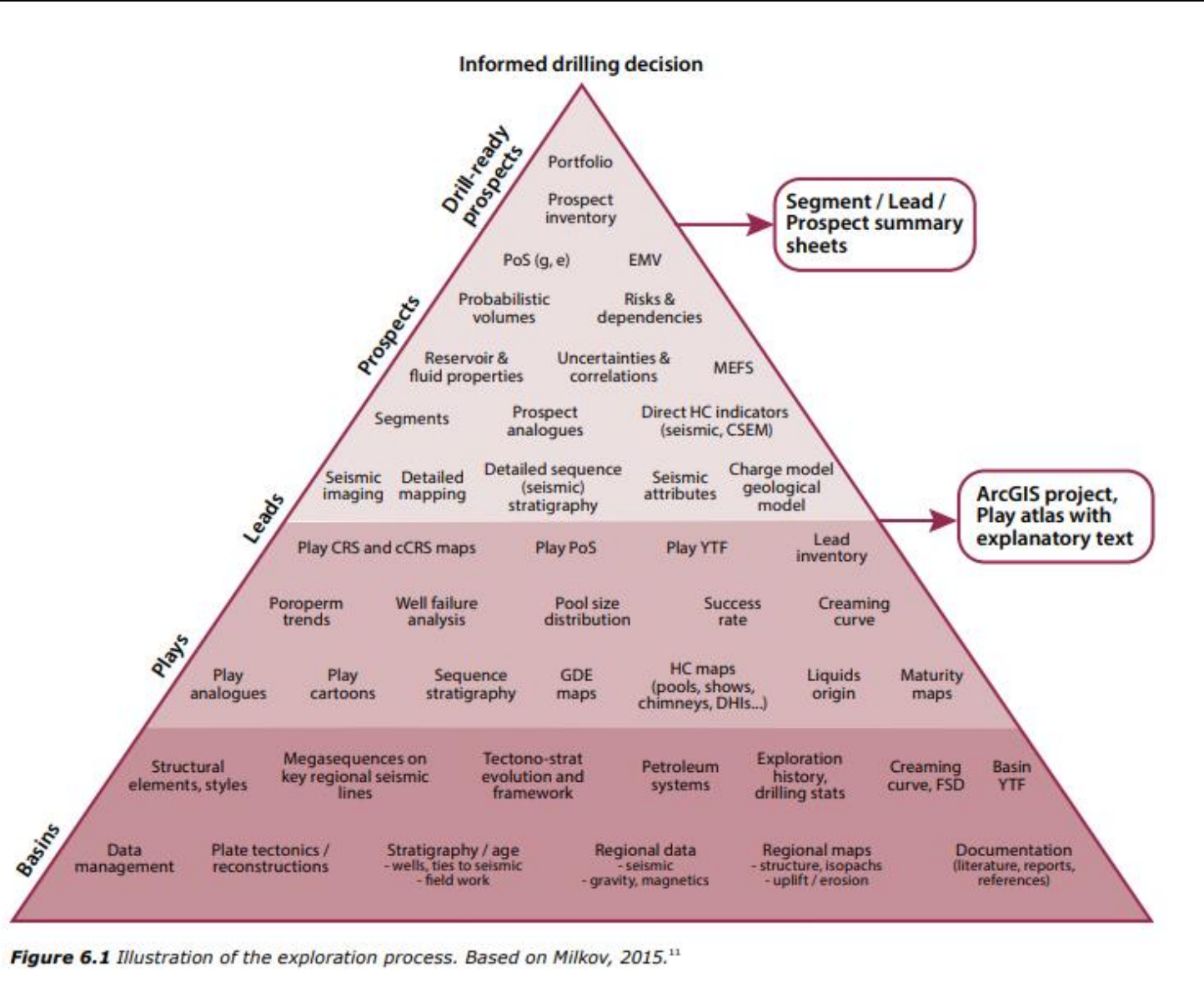


Figure 6.1 Illustration of the exploration process. Based on Milkov, 2015.¹¹

- Lack of regional integration
- Lack of seismic coverage and poor quality outside productive areas
- Lack of mud logging, mud gas and core lab analysis
- Lack of regional databases and statistics
- Lack of geochemical and PVT analysis
- Source to sink analysis
- Sequence stratigraphy
- Basin modeling
- Play based exploration
- Challenges: bureaucracy, contracting and procurement, export of data and samples

Source rock uncertainty and YTF

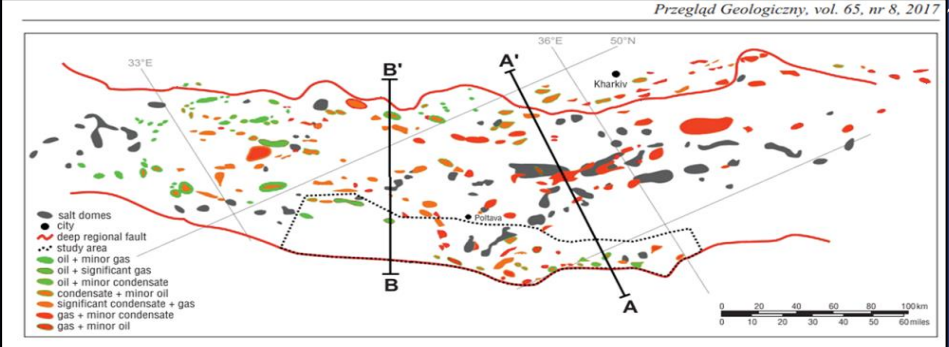
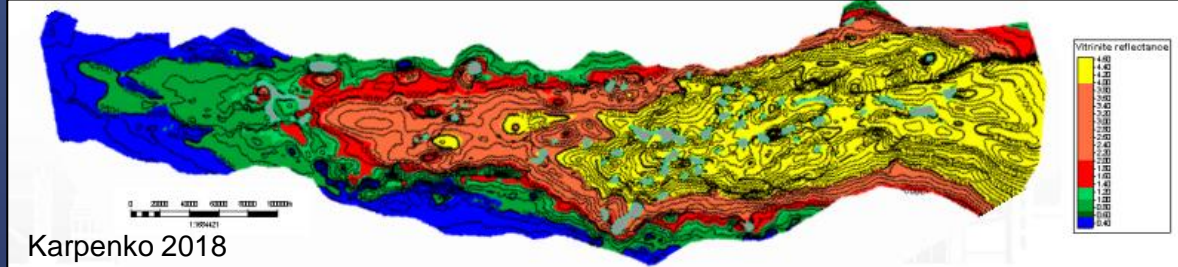
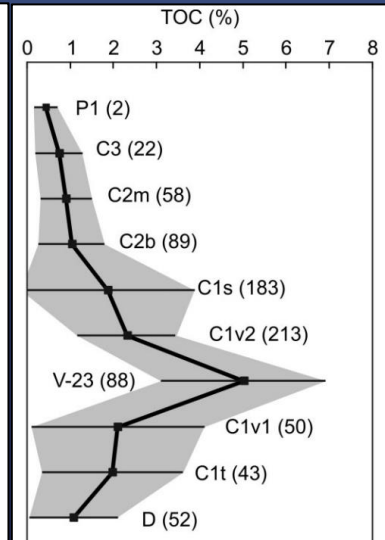
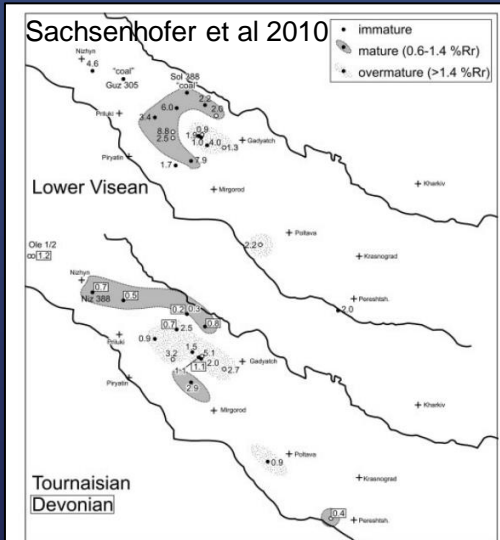
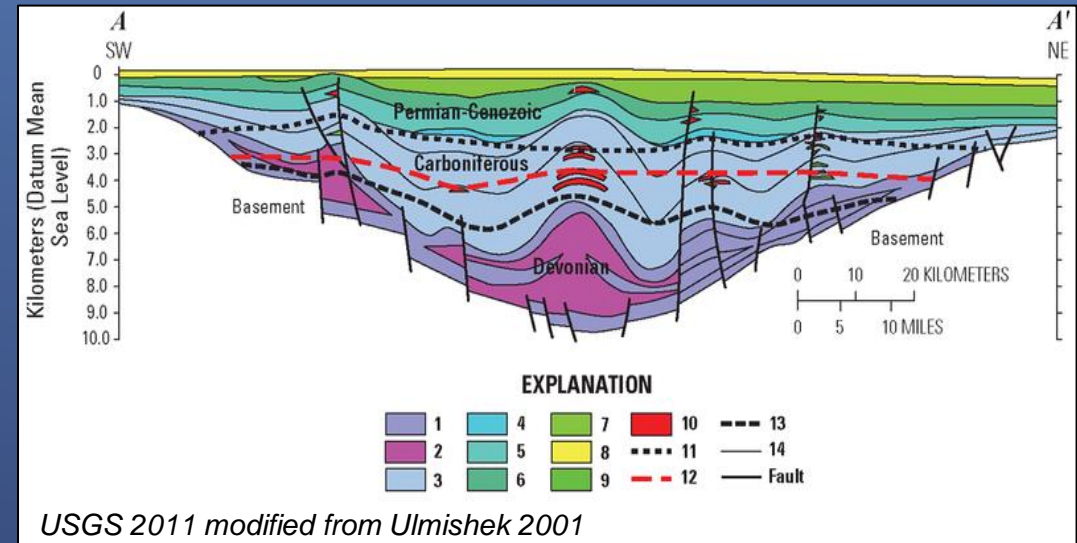
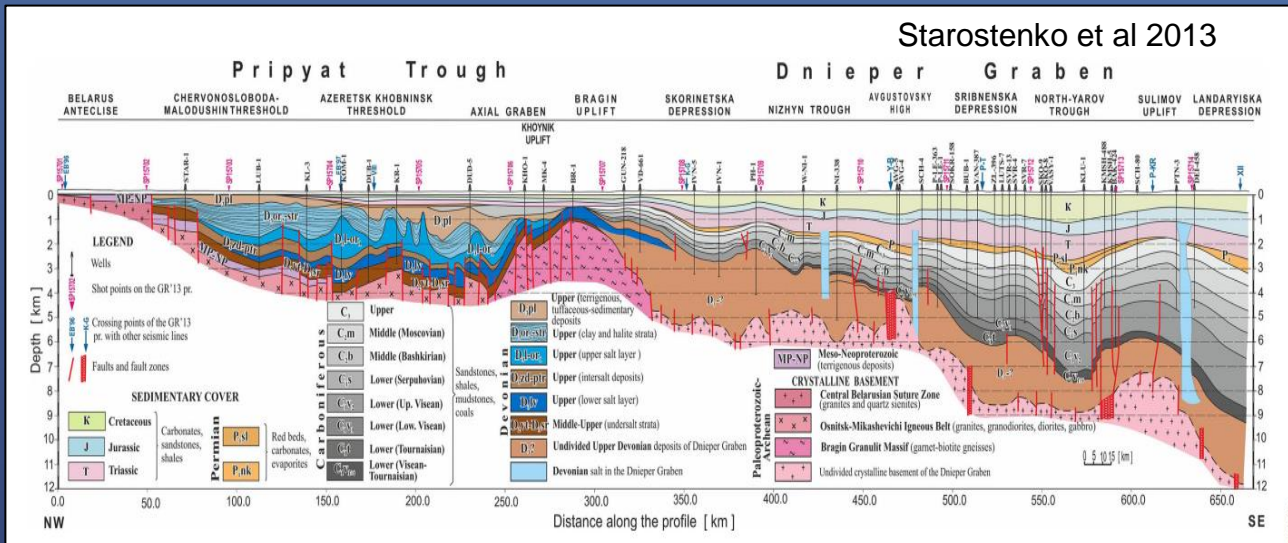


Fig. 5. Maps showing mean TOC contents and maturity of pelitic rocks in Devonian to Lower Visean horizons. Database: this study and Kabyshev *et al.* (1999).

Fig. 20. Average TOC content in pelitic rocks in different stratigraphic units. Bars indicate standard deviation. Numbers of samples are stated in parentheses. (Coals and coaly rocks were not considered).

FELIPE RODRIGUEZ MONREAL

INDEPENDENT CONSULTANT

BASIN AND PETROLEUM SYSTEMS ANALYST

WEYBRIDGE, UK

FELIPE.RODRIGUEZMONREAL@OUTLOOK.COM

WWW.LINKEDIN.COM/IN/FELIPE-RODRIGUEZ-MONREAL